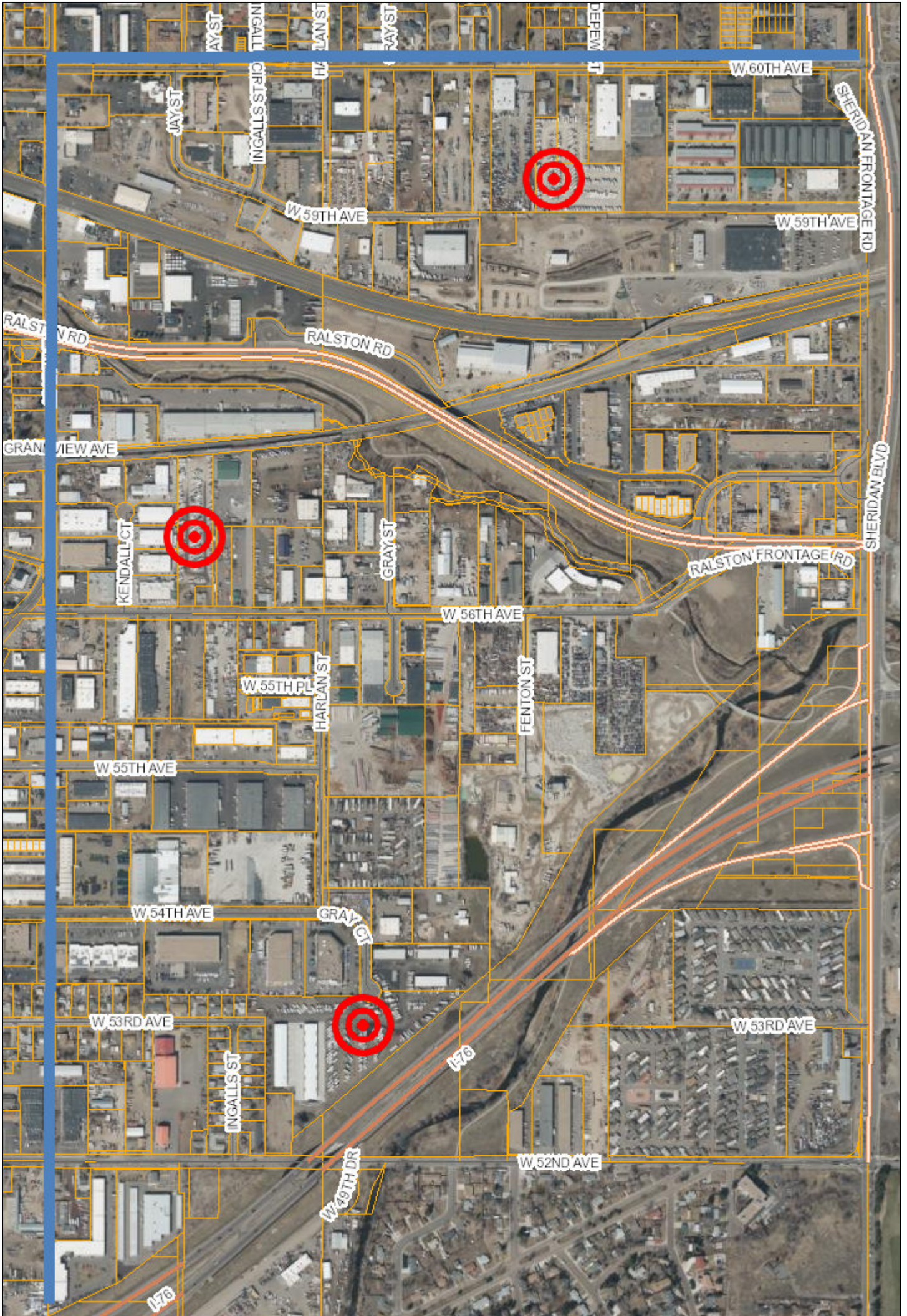


# 3 RV Lots South of 60th Ave and East of Lamar St.



Jefferson County offers this service for informational purposes only for the convenience of the user and assumes no liability whatsoever associated with the use or misuse of this data. This data is provided "as is" and Jefferson County disclaims all representations and warranties expressed or implied, including without limitation all representations and warranties as to the completeness, accuracy, correctness, merchantability and fitness for a particular purpose of any data and any and all warranties of title related thereto.  
Sources: Esri, HERE, Garmin, USGS, Intermap, INCREMENT P, NRCan, Esri Japan, METI, Esri China (Hong Kong), Esri Korea, Esri (Thailand), NGCC, (c) OpenStreetMap contributors, and the GIS User Community

Author: ArcGIS Web AppBuilder  
Date: 8/31/2023